



ADDENDUM 1

NORTHWOOD ELEMENTARY SCHOOL – ROOF REPLACEMENT PROJECT BUILDINGS 100, 200, 300, 400 & 500

Bid No. B-11-2022-23

December 6, 2022

**BERRYESSA UNION SCHOOL DISTRICT
SAN JOSE, CALIFORNIA**

This Addendum forms a part of the Contract Documents. Bidders must acknowledge receipt of this Addendum in the space provided on the Bid Form. Failure to do so may subject the Bidder to disqualification.

GENERAL INFORMATION:

Item 1: Site Meeting & Roof Walk:

A second site meeting has been scheduled for Thursday, December 8, 2022, at 2:00 pm to give contractors an opportunity to walk the building roofs. Please meet in the Northwood ES parking lot at 2:00 pm.

SPECIFICATION CLARIFICATIONS:

Item 2: Bid Date:

The bid date has been changed to December 21, 2022, at 2:00 pm.

Item 3: Painting Specification (Document 09 91 00):

Replace the existing Painting specification with the attached specification document labeled addendum #1.

Plan Clarifications

Item 5: Addendum #1 Plan Set

Replace the existing plan set in its entirety with the attached plan set labeled addendum #1.

Attachments:

Document 09 91 00 - Painting specification – Addendum #1 – (6 pages)
Plan set - Addendum #1 – (10 plan sheets)

SECTION 09 91 00

PAINTING

PART 1 - GENERAL

1.01 SECTION INCLUDES

- A. Surface preparation and field application of paints for miscellaneous items listed in this specification and as indicated on the Drawings.

1.02 RELATED SECTIONS

- A. Section 07 60 05 – Flashings and Sheet Metal

1.03 REFERENCES

- A. ASTM D2016 – Test Method for Moisture Content of wood.
- B. PDCA – Painting: Architectural Specifications Manual.

1.04 DEFINITIONS

- A. Conform to ASTM D16 for interpretation of terms used in this Section.

1.05 SCOPE OF WORK

- A. Exterior
 - 1. All sheet metal flashing and miscellaneous sheet metal items on the roof, including but not limited to gutters, edge metal, sleeve flashings.
- B. Painting Schedule:
 - 1. Items listed in 1.05A: Color to chosen by the District.

1.06 SUBMITTALS

- A. Manufacturer's Instructions, including:
 - 1. Coating application instructions.
 - 2. Coating color charts.
 - 3. Material Safety Sheets (MSDS).
- B. Schedule for coating application.

- C. Applicator's qualifications consisting of evidence showing satisfactory application of the proposed paint at a minimum of two sites. Provide contact name and telephone number for each site. Provide SSPC applicator certificate.

1.07 REGULATORY REQUIREMENTS

- A. California Air Resources Board (CARB).
- B. Bay Area Air Quality Management District.

1.08 DELIVERY, STORAGE, AND HANDLING

- A. Deliver products to the site in sealed and labeled containers; inspect to verify acceptability.
- B. Include on container label: Manufacturer's name, type of paint, brand name, lot number, coverage, surface preparation, drying time, cleanup requirements, color designation, and instructions for mixing and reducing.
- C. Store paint materials at minimum ambient temperature of 45 degrees F and a maximum of 90 degrees F, in a ventilated area, and as recommended by the manufacturer's instructions.

1.09 ENVIRONMENTAL REQUIREMENTS

- A. Do not apply materials when surface and ambient temperatures are outside the temperature ranges required by the paint product manufacturer.
- B. Do not apply exterior coatings during rain, or when relative humidity is outside the humidity ranges required by the paint product manufacturer.
- C. Minimum Application Temperatures for Latex Paints: 45 degrees F for interiors; 50 degrees F for exteriors; unless noted otherwise by the manufacturer's instructions.
- D. Provide minimum lighting level of 80 foot-candles measured at substrate surface.

PART 2 – PRODUCTS

2.01 GENERAL REQUIREMENTS

- A. Coating products shall not contain asbestos, zinc chromate, strontium chromate, or lead.

2.02 PRIMER

A. Metal Surfaces:

1. Type: Alkyd Metal Primer
2. Dry Film Thickness: 2.0 mils minimum per coat
3. Number of coats: one

B. Wood Surfaces:

1. Type: Acrylic Latex Primer
2. Dry Film Thickness: 2.0 mils minimum per coat
3. Number of coats: one

2.03 FINISH PAINT (Two Coats)

A. Metal Surfaces:

1. Type: Acrylic Latex
2. Dry Film Thickness: 1.5 mils minimum per coat
3. Number of coats: two

B. Wood, Concrete, and Plaster Surfaces:

1. Type: Gloss Enamel
2. Dry Film Thickness: 1.5 mils minimum per coat
3. Number of coats: two

2.04 PAINT MANUFACTURERS

- A. Kelly Moore (District Standard)
- B. Glidden Coatings and Resins
- C. Pratt & Lambert
- D. Sherwin Williams

E. Textured Coatings of America

2.05 ACCESSORIES

- A. Etching Material: Compatible with primer and paint coating.
- B. Equipment: Use coating manufacturer-approved equipment. Coating application shall be performed by brush or roller only.
- C. Masking tapes, sheets, and sealants: Compatible with the materials they are applied to and shall not leave stains on the adjacent surfaces.
- D. Cleaners and washes for removal of mill oil and scale: Compatible and recommended by the coating manufacturer.
- E. Galvanized Iron Cleaner: Galvaprime.

PART 3 - EXECUTION

3.01 GENERAL

- A. Prior to surface preparation and coating applications, remove, mask or otherwise protect all adjacent surfaces.
- B. Contact Owner or Owner's Representative for direction regarding deteriorated existing painted surfaces.
- C. Spray-application of paint shall not be permitted unless approved in writing by the Owner.
- D. Repair or replace items damaged in the course of painting to the Owner's satisfaction.

3.02 EXAMINATION

- A. Verify that substrate conditions are ready to receive Work as instructed by the product manufacturer, where applicable.
- B. Examine surfaces scheduled to be finished prior to commencement of Work. Report any condition that may potentially affect proper installation.
- C. Test shop applied primer for compatibility with subsequent cover materials.
- D. Do not apply finishes unless moisture content of surfaces are below the following maximums:
 - 1. Plaster and Wood Trim: 15%, measured in accordance with ASTM D2016.

2. Gypsum Board: 12%.

3.03 PREPARATION

- A. Remove dirt, scale, loose coatings and particles, grease, oil, disintegrated coatings, and other substances deleterious to coating performance for component substrates in accordance with SSPC SP-1, Power Tool Cleaning, to remove rust and loose coatings as well as to remove glossy surfaces of existing paint films.
- B. Before application of coatings on existing coating surfaces with no surface defect, defined as surfaces with intact coatings that can not be removed with a putty knife, wipe the previously painted surface with a clean, dry cloth saturated with the coating manufacturer's recommended cleaning solution. Allow surface to dry.
- B. Remove all mill oils and scale from galvanized sheet metal prior to painting.
- C. Requirements specified herein are minimums. Comply with coating manufacturer's recommendations if more stringent.

3.04 APPLICATION: METAL SURFACES

- A. Verify coating compatibility by applying a 2 foot square test patch on each surface to be painted. Obtain Owner's approval on test patch before proceeding.
- B. Apply coating materials to surfaces designated in this section's Scope of Work in accordance with Steel Structures Painting Council (SSPC) Paint - 1 methods. Thoroughly work coating materials into joints, crevices, and open spaces. Touch up damaged coatings before applying subsequent coats.
 1. Etch all sheet metal items prior to applying primer. Apply primer and paint after repairs and mechanical fasteners have been installed.
 2. Apply specified primer on the same day that the surface is cleaned. If flash rusting occurs, reclean and prime the surface prior to finish coat application.
 3. Use dry film thickness gages to measure coatings.
- C. Environmental Conditions - Do not apply coatings during foggy or rainy weather or under the following conditions:
 1. Ambient temperature less than 5° F above dew point.
 2. Below 50° F or over 95° F for alkyd coatings.
- D. Drying Time - Allow sufficient time between coats, as recommended by the coating manufacturer, to permit thorough drying. Provide each coat in the condition necessary to receive the next coat.

- E. Do not allow primer coats or intermediate coats to weather for more than 30 days or longer than recommended by their manufacturer, before applying next coat. Follow Manufacturer's recommendations for preparation primer coats or intermediate coats. Each coat shall entirely cover the previous coat or prepared surface with a visually perceptible difference in shade of successive coats.

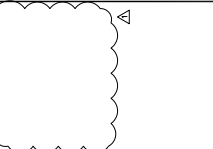
3.05 APPLICATION: WOOD SURFACES

- A. Prime all new wood components hidden and exposed, except for roof top blocking prior to installing. Prime face sides and back of each piece. Allow primer to dry prior to installing. Priming of new work after installation is forbidden. Prime areas of repaired cement plaster surfaces prior to painting.
- B. Apply primer to all wood components to be repainted as part of this specification. Thoroughly work coating materials into joints, crevices, and open spaces. Touch up damaged coatings before applying subsequent coats.
 - 1. Apply primer to existing wood components only after repairs and mechanical fasteners have been installed.
 - 2. Apply specified primer on the same day that the surface is cleaned.
 - 3. Use dry film thickness gages to measure coatings.
- C. Drying Time: Allow sufficient time between coats, as recommended by the coating manufacturer, to permit thorough drying. Provide each coat in the condition necessary to receive the next coat.
- D. Do not allow primer coats or intermediate coats to weather for more than 5 before applying next coat. Follow Manufacturer's recommendations for preparation primer coats or intermediate coats. Each coat shall entirely cover the previous coat or prepared surface with a visually perceptible difference in shade of successive coats.

3.06 CLEANING

- A. Repair brush marks, scratches, abrasions, and minor surface defects in coating's finish in accordance with manufacturer's printed instructions.
- B. Finish of repaired surfaces shall be uniform and free from blemishes and variations in color and surface texture.

END OF SECTION



Standard Engineers, Inc.
 Consulting Engineers
 2700 Alameda Drive
 Alameda, CA 94501
 (925) 751-1100
 www.standardengineers.com

This drawing and the design and construction information contained herein are the property of Standard Engineers, Inc. and shall remain the confidential property of Standard Engineers, Inc. until such time as they are otherwise indicated in writing.

DATE: 10/15/2021
 DRAWING NO.: AS NOTED
 SHEET TITLE:

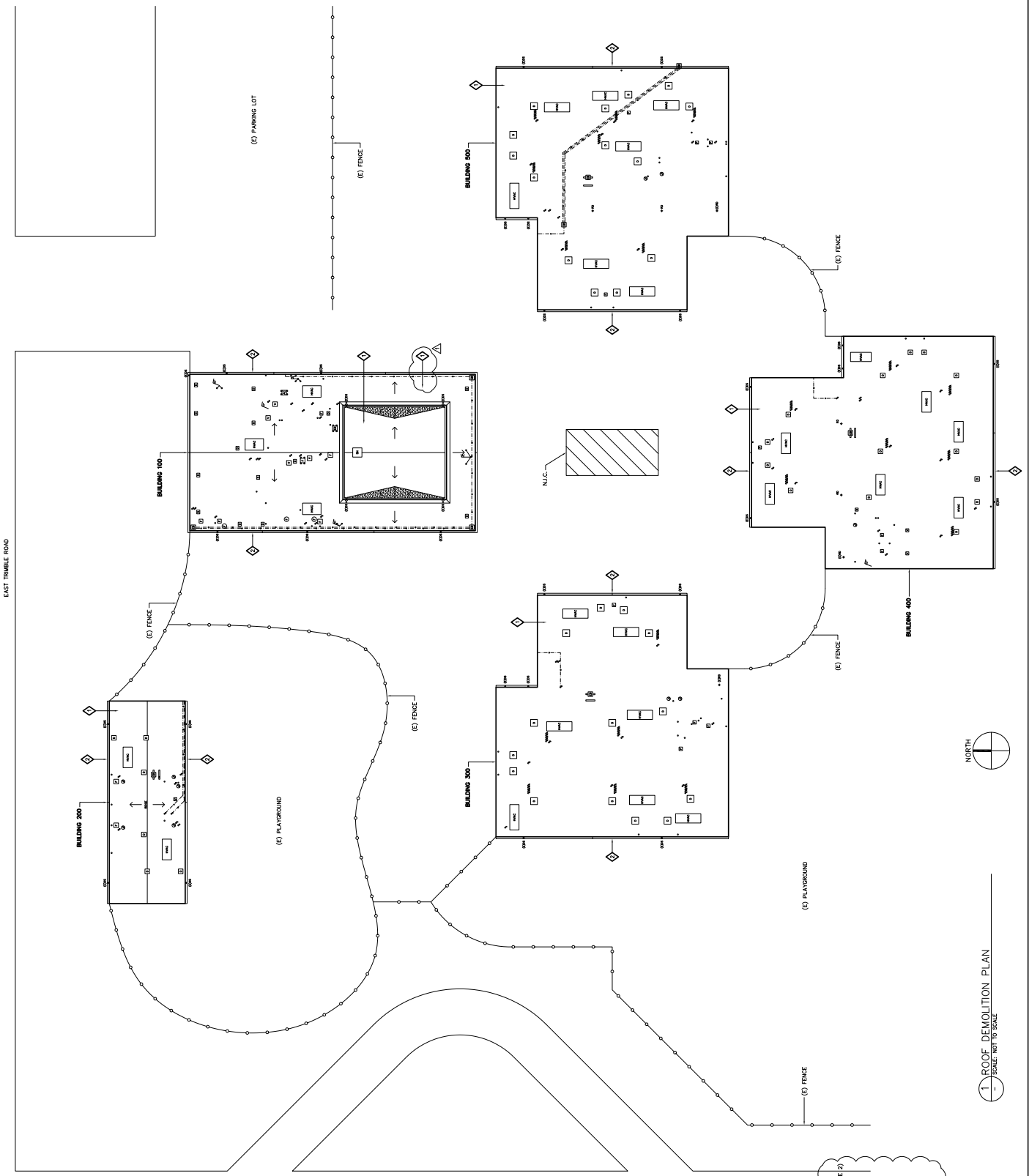
PROJECT
 ROOF REPLACEMENT-BUILDINGS 100 TO 500
 NORTHWOOD ELEMENTARY SCHOOL
 2760 EAST TRIMBLE ROAD
 SAN JOSE, CALIFORNIA

OWNER
 BERRESSA UNION SCHOOL DISTRICT
 1376 PIEDMONT ROAD
 SAN JOSE, CALIFORNIA

NO.	DATE	DESCRIPTION	BY
1	10/15/2021	ISSUED FOR PERMIT	ET
2	10/15/2021	ISSUED FOR PERMIT	ET

PROJECT NO.: 20243
 CAD FILE
 DESIGNED BY: AEB
 DRAWN BY: ET
 CHECKED BY: ET
 DATE: 15 OCT 2021
 DRAWING SCALE: AS NOTED
 SHEET TITLE:

ROOF DEMOLITION PLAN
 DRAWING NO. AD2.0
 OF



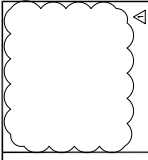
- LEGEND
- ▭ SCOPE OF WORK
 - ▭ NOT IN CONTRACT

DEMOLITION KEY NOTES:
 (1) REMOVE (2) BUILT-UP ROOF (NOTE 2)
 (3) GUTTERS TO REMAIN

NOTES:
 (1) PORTABLE BUILDINGS AND OTHER SITE FEATURES ARE PLANNED TO REMAIN ON THE SITE.
 (2) JACKS ARE PART OF THE ROOF REMOVAL.



1. ROOF DEMOLITION PLAN
 SCALE: NOT TO SCALE



Standard Engineers, Inc.
 Consulting-Design
 2700 Alameda Drive
 Alameda, CA 94501
 918-284-1111
 info@standardengineers.com

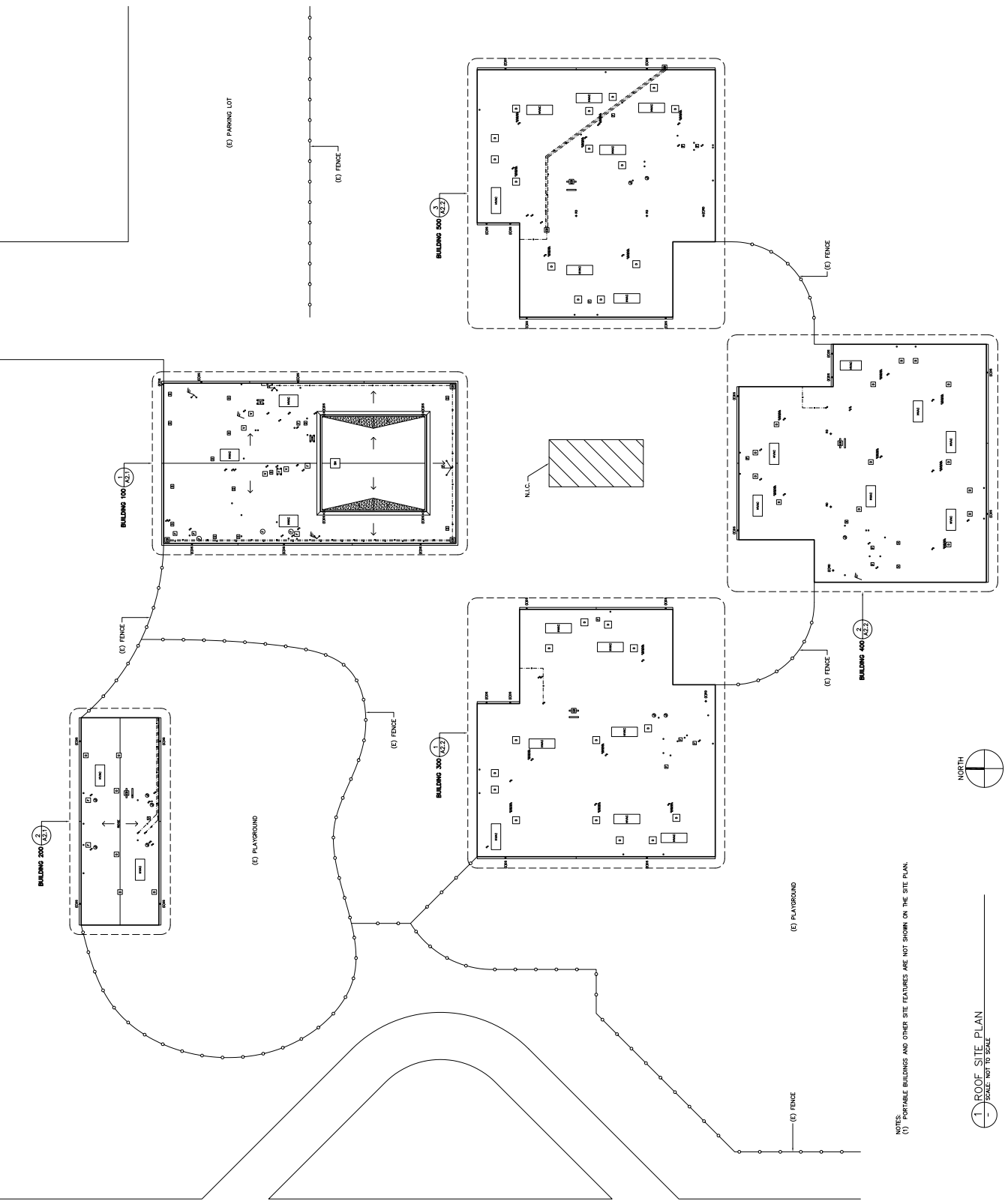
This drawing and the design and construction information contained herein are the property of Standard Engineers, Inc. and shall remain the confidential property of Standard Engineers, Inc. until such time as they are otherwise disclosed in writing by Standard Engineers, Inc.



PROJECT
 ROOF REPLACEMENT-BUILDINGS 100 TO 500
 NORTHWOOD ELEMENTARY SCHOOL
 2760 EAST TRIMBLE ROAD
 SAN JOSE, CALIFORNIA
 CLIENT
 BERRESSA UNION SCHOOL DISTRICT
 1376 PIEDMONT ROAD
 SAN JOSE, CALIFORNIA

NO.	DATE	DESCRIPTION	BY
1	12/22	REVISION	ET
2	12/22	REVISION	ET
3	12/22	REVISION	ET
4	12/22	REVISION	ET
5	12/22	REVISION	ET
6	12/22	REVISION	ET
7	12/22	REVISION	ET
8	12/22	REVISION	ET
9	12/22	REVISION	ET
10	12/22	REVISION	ET
11	12/22	REVISION	ET
12	12/22	REVISION	ET
13	12/22	REVISION	ET
14	12/22	REVISION	ET
15	12/22	REVISION	ET
16	12/22	REVISION	ET
17	12/22	REVISION	ET
18	12/22	REVISION	ET
19	12/22	REVISION	ET
20	12/22	REVISION	ET
21	12/22	REVISION	ET
22	12/22	REVISION	ET
23	12/22	REVISION	ET
24	12/22	REVISION	ET
25	12/22	REVISION	ET
26	12/22	REVISION	ET
27	12/22	REVISION	ET
28	12/22	REVISION	ET
29	12/22	REVISION	ET
30	12/22	REVISION	ET
31	12/22	REVISION	ET
32	12/22	REVISION	ET
33	12/22	REVISION	ET
34	12/22	REVISION	ET
35	12/22	REVISION	ET
36	12/22	REVISION	ET
37	12/22	REVISION	ET
38	12/22	REVISION	ET
39	12/22	REVISION	ET
40	12/22	REVISION	ET
41	12/22	REVISION	ET
42	12/22	REVISION	ET
43	12/22	REVISION	ET
44	12/22	REVISION	ET
45	12/22	REVISION	ET
46	12/22	REVISION	ET
47	12/22	REVISION	ET
48	12/22	REVISION	ET
49	12/22	REVISION	ET
50	12/22	REVISION	ET
51	12/22	REVISION	ET
52	12/22	REVISION	ET
53	12/22	REVISION	ET
54	12/22	REVISION	ET
55	12/22	REVISION	ET
56	12/22	REVISION	ET
57	12/22	REVISION	ET
58	12/22	REVISION	ET
59	12/22	REVISION	ET
60	12/22	REVISION	ET
61	12/22	REVISION	ET
62	12/22	REVISION	ET
63	12/22	REVISION	ET
64	12/22	REVISION	ET
65	12/22	REVISION	ET
66	12/22	REVISION	ET
67	12/22	REVISION	ET
68	12/22	REVISION	ET
69	12/22	REVISION	ET
70	12/22	REVISION	ET
71	12/22	REVISION	ET
72	12/22	REVISION	ET
73	12/22	REVISION	ET
74	12/22	REVISION	ET
75	12/22	REVISION	ET
76	12/22	REVISION	ET
77	12/22	REVISION	ET
78	12/22	REVISION	ET
79	12/22	REVISION	ET
80	12/22	REVISION	ET
81	12/22	REVISION	ET
82	12/22	REVISION	ET
83	12/22	REVISION	ET
84	12/22	REVISION	ET
85	12/22	REVISION	ET
86	12/22	REVISION	ET
87	12/22	REVISION	ET
88	12/22	REVISION	ET
89	12/22	REVISION	ET
90	12/22	REVISION	ET
91	12/22	REVISION	ET
92	12/22	REVISION	ET
93	12/22	REVISION	ET
94	12/22	REVISION	ET
95	12/22	REVISION	ET
96	12/22	REVISION	ET
97	12/22	REVISION	ET
98	12/22	REVISION	ET
99	12/22	REVISION	ET
100	12/22	REVISION	ET

ROOF REPLACEMENT-BUILDINGS 100 TO 500
 NORTHWOOD ELEMENTARY SCHOOL
 2760 EAST TRIMBLE ROAD
 SAN JOSE, CALIFORNIA
 BERRESSA UNION SCHOOL DISTRICT
 1376 PIEDMONT ROAD
 SAN JOSE, CALIFORNIA



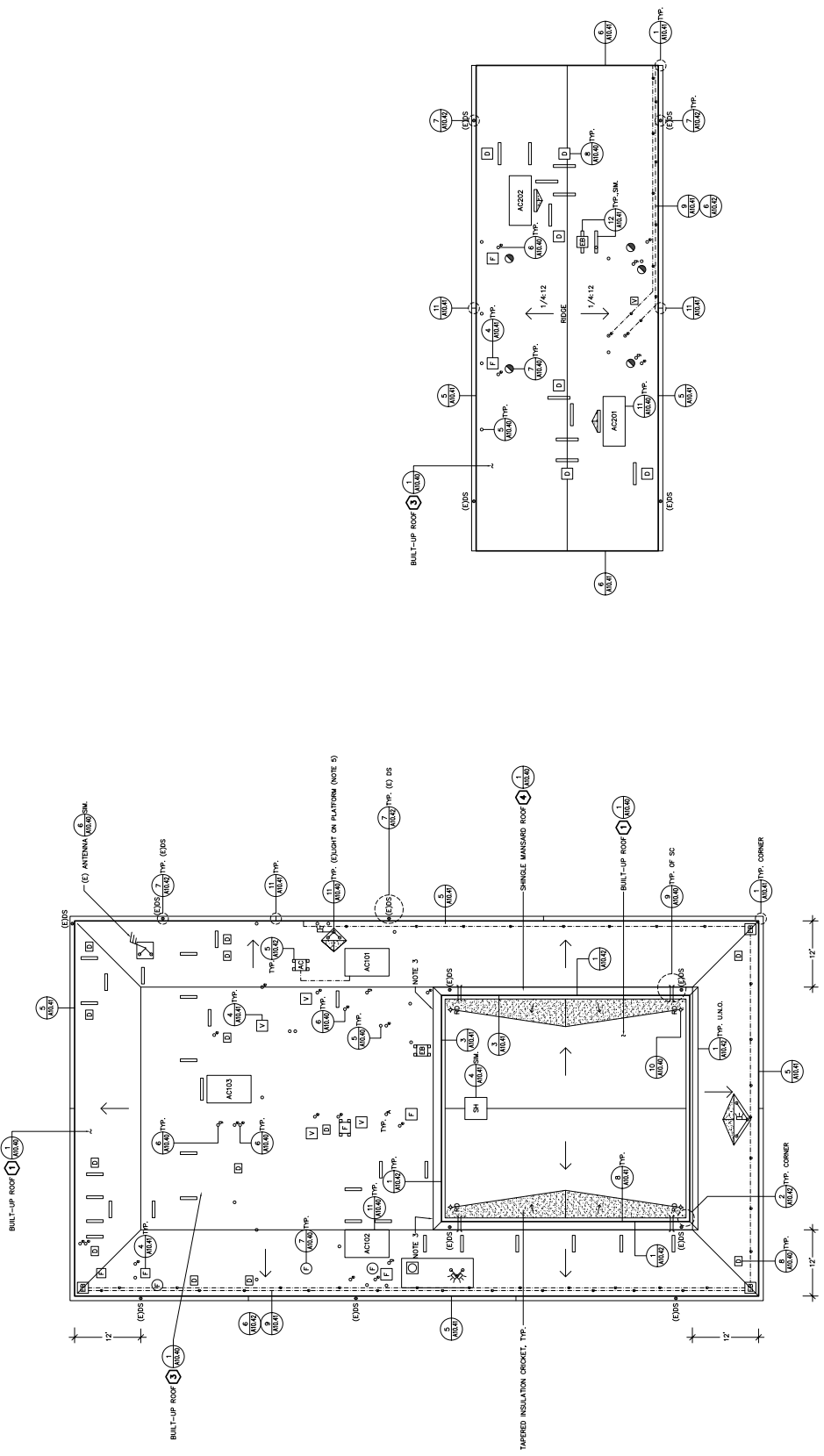
NOTES:
 (1) PORTABLE BUILDINGS AND OTHER SITE FEATURES ARE NOT SHOWN ON THE SITE PLAN.



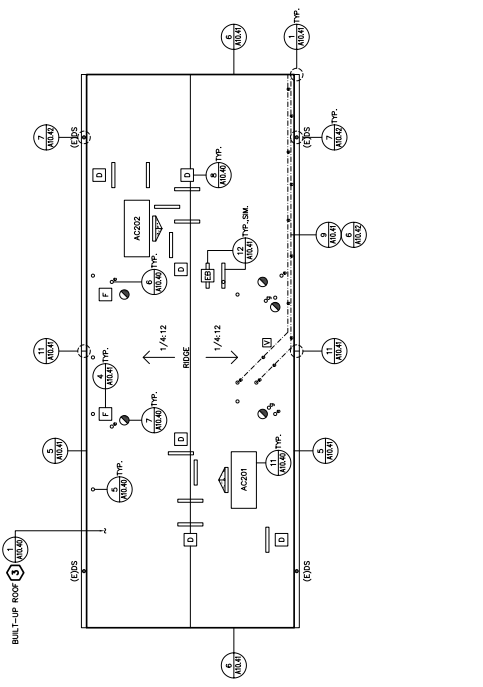
1" ROOF SITE PLAN
 SCALE: NOT TO SCALE

DRAWING NO.
 A2.0
 OF

- NOTES:
- (1) REMOVE AND REINSTALL SHEET METAL AS REQUIRED TO INSTALL EDGE METAL. SEE COVER FLASHING DETAIL FOR ANTI-CORROSION INTERFACE (2 LOCATIONS).
 - (2) REFER TO DETAIL 11/A10.01 FOR BUILT CURB FLASHING.



1 - ROOF PLAN-BUILDING 100
SCALE: 1/8"=1'-0"



2 - ROOF PLAN-BUILDING 200
SCALE: 1/8"=1'-0"

PROJECT
 ROOF REPLACEMENT-BUILDINGS 100 TO 500
 NORTHWOOD ELEMENTARY SCHOOL
 2760 EAST TRIMBLE ROAD
 SAN JOSE, CALIFORNIA
 OAKRIDGE
 BERRESSA UNION SCHOOL DISTRICT
 1376 FIDMONT ROAD
 SAN JOSE, CALIFORNIA

Standard Engineers, Inc.
 Consulting-Design
 2000 Alameda Drive
 Fremont, CA 94538
 P. 925.434.1111
 F. 925.434.1100
 www.standardengineers.com

This drawing and the design and construction information contained herein are the property of Standard Engineers, Inc. and shall remain the property of Standard Engineers, Inc. until written permission is granted by Standard Engineers, Inc.

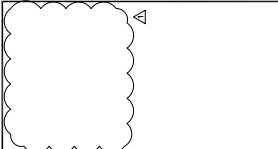
REGISTERED PROFESSIONAL ENGINEER
 CIVIL
 STATE OF CALIFORNIA
 LICENSE NO. 44830

NO.	DATE	DESCRIPTION	BY
1	12/22/20	ADDENDUM 1	ET
2	01/15/21	REVISION	ET
3	01/15/21	REVISION	ET
4	01/15/21	REVISION	ET
5	01/15/21	REVISION	ET
6	01/15/21	REVISION	ET
7	01/15/21	REVISION	ET
8	01/15/21	REVISION	ET
9	01/15/21	REVISION	ET
10	01/15/21	REVISION	ET
11	01/15/21	REVISION	ET
12	01/15/21	REVISION	ET
13	01/15/21	REVISION	ET
14	01/15/21	REVISION	ET
15	01/15/21	REVISION	ET
16	01/15/21	REVISION	ET
17	01/15/21	REVISION	ET
18	01/15/21	REVISION	ET
19	01/15/21	REVISION	ET
20	01/15/21	REVISION	ET

ROOF PLANS
 BUILDINGS 100
 AND 200

DRAWING NO. A2.1

SHEET TITLE



Standard Engineers, Inc.
 Consulting Engineers
 2000 Inwood Drive
 Redwood City, CA 94063
 (415) 967-1100
 www.standardengineers.com

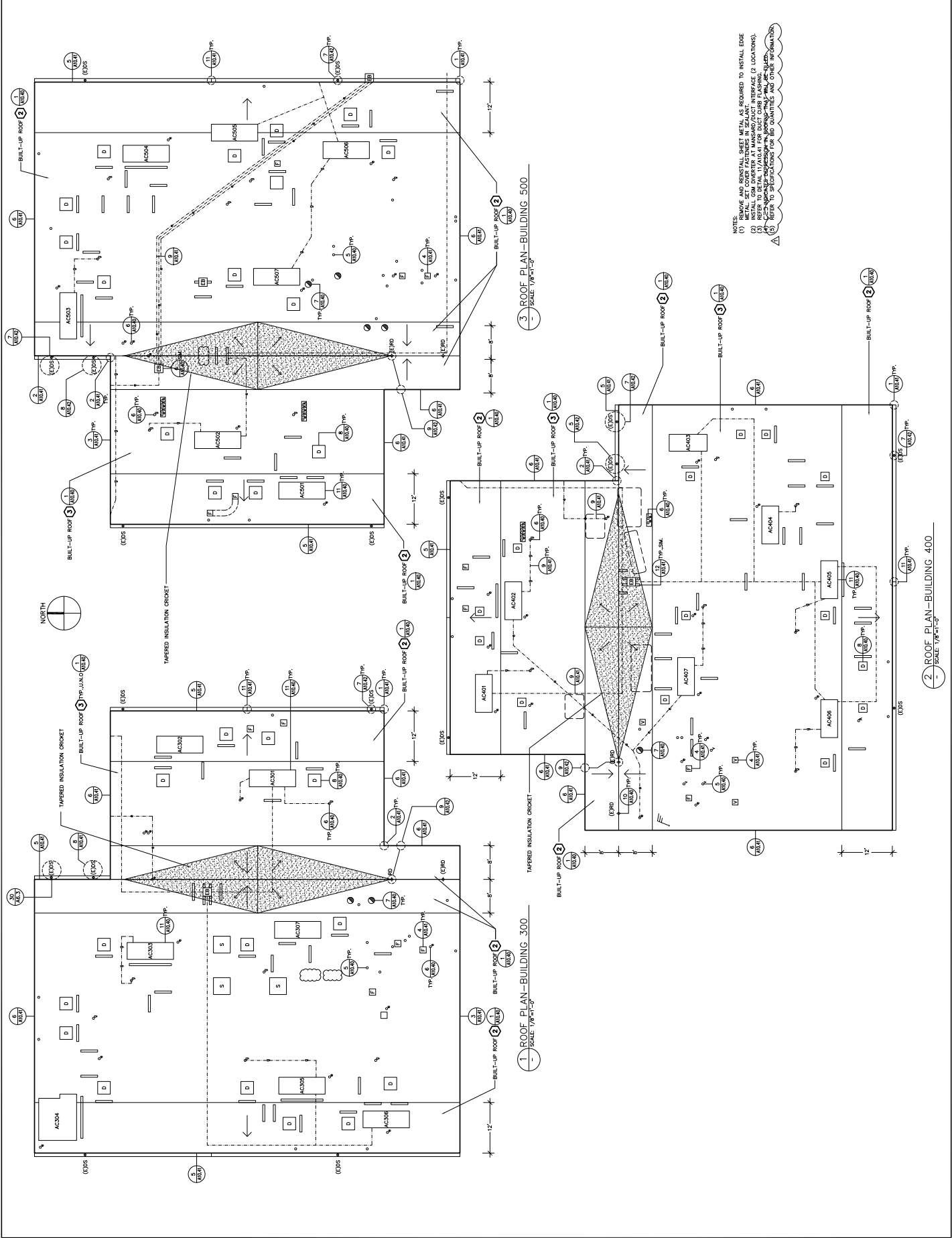


This drawing and the design and construction details herein are the property of Standard Engineers, Inc. and shall remain the confidential property of Standard Engineers, Inc. No part of this drawing may be reproduced or transmitted in any form or by any means, electronic, mechanical, photocopying, recording, or by any information storage and retrieval system, without the prior written permission of Standard Engineers, Inc.

PROJECT
 ROOF REPLACEMENT—BUILDINGS 100 TO 500
 NORTHWOOD ELEMENTARY SCHOOL
 2760 EAST TRIMBLE ROAD
 SAN JOSE, CALIFORNIA
 CLIENT
 BERKESSA UNION SCHOOL DISTRICT
 1376 FLEMONT ROAD
 SAN JOSE, CALIFORNIA

NO.	DATE	DESCRIPTION	BY
1	12/2/22	ISSUED FOR PERMIT	ET
2	12/2/22	ISSUED FOR PERMIT	ET
3	12/2/22	ISSUED FOR PERMIT	ET
4	12/2/22	ISSUED FOR PERMIT	ET
5	12/2/22	ISSUED FOR PERMIT	ET
6	12/2/22	ISSUED FOR PERMIT	ET
7	12/2/22	ISSUED FOR PERMIT	ET
8	12/2/22	ISSUED FOR PERMIT	ET
9	12/2/22	ISSUED FOR PERMIT	ET
10	12/2/22	ISSUED FOR PERMIT	ET
11	12/2/22	ISSUED FOR PERMIT	ET
12	12/2/22	ISSUED FOR PERMIT	ET
13	12/2/22	ISSUED FOR PERMIT	ET
14	12/2/22	ISSUED FOR PERMIT	ET
15	12/2/22	ISSUED FOR PERMIT	ET
16	12/2/22	ISSUED FOR PERMIT	ET
17	12/2/22	ISSUED FOR PERMIT	ET
18	12/2/22	ISSUED FOR PERMIT	ET
19	12/2/22	ISSUED FOR PERMIT	ET
20	12/2/22	ISSUED FOR PERMIT	ET
21	12/2/22	ISSUED FOR PERMIT	ET
22	12/2/22	ISSUED FOR PERMIT	ET
23	12/2/22	ISSUED FOR PERMIT	ET
24	12/2/22	ISSUED FOR PERMIT	ET
25	12/2/22	ISSUED FOR PERMIT	ET
26	12/2/22	ISSUED FOR PERMIT	ET
27	12/2/22	ISSUED FOR PERMIT	ET
28	12/2/22	ISSUED FOR PERMIT	ET
29	12/2/22	ISSUED FOR PERMIT	ET
30	12/2/22	ISSUED FOR PERMIT	ET
31	12/2/22	ISSUED FOR PERMIT	ET
32	12/2/22	ISSUED FOR PERMIT	ET
33	12/2/22	ISSUED FOR PERMIT	ET
34	12/2/22	ISSUED FOR PERMIT	ET
35	12/2/22	ISSUED FOR PERMIT	ET
36	12/2/22	ISSUED FOR PERMIT	ET
37	12/2/22	ISSUED FOR PERMIT	ET
38	12/2/22	ISSUED FOR PERMIT	ET
39	12/2/22	ISSUED FOR PERMIT	ET
40	12/2/22	ISSUED FOR PERMIT	ET
41	12/2/22	ISSUED FOR PERMIT	ET
42	12/2/22	ISSUED FOR PERMIT	ET
43	12/2/22	ISSUED FOR PERMIT	ET
44	12/2/22	ISSUED FOR PERMIT	ET
45	12/2/22	ISSUED FOR PERMIT	ET
46	12/2/22	ISSUED FOR PERMIT	ET
47	12/2/22	ISSUED FOR PERMIT	ET
48	12/2/22	ISSUED FOR PERMIT	ET
49	12/2/22	ISSUED FOR PERMIT	ET
50	12/2/22	ISSUED FOR PERMIT	ET
51	12/2/22	ISSUED FOR PERMIT	ET
52	12/2/22	ISSUED FOR PERMIT	ET
53	12/2/22	ISSUED FOR PERMIT	ET
54	12/2/22	ISSUED FOR PERMIT	ET
55	12/2/22	ISSUED FOR PERMIT	ET
56	12/2/22	ISSUED FOR PERMIT	ET
57	12/2/22	ISSUED FOR PERMIT	ET
58	12/2/22	ISSUED FOR PERMIT	ET
59	12/2/22	ISSUED FOR PERMIT	ET
60	12/2/22	ISSUED FOR PERMIT	ET
61	12/2/22	ISSUED FOR PERMIT	ET
62	12/2/22	ISSUED FOR PERMIT	ET
63	12/2/22	ISSUED FOR PERMIT	ET
64	12/2/22	ISSUED FOR PERMIT	ET
65	12/2/22	ISSUED FOR PERMIT	ET
66	12/2/22	ISSUED FOR PERMIT	ET
67	12/2/22	ISSUED FOR PERMIT	ET
68	12/2/22	ISSUED FOR PERMIT	ET
69	12/2/22	ISSUED FOR PERMIT	ET
70	12/2/22	ISSUED FOR PERMIT	ET
71	12/2/22	ISSUED FOR PERMIT	ET
72	12/2/22	ISSUED FOR PERMIT	ET
73	12/2/22	ISSUED FOR PERMIT	ET
74	12/2/22	ISSUED FOR PERMIT	ET
75	12/2/22	ISSUED FOR PERMIT	ET
76	12/2/22	ISSUED FOR PERMIT	ET
77	12/2/22	ISSUED FOR PERMIT	ET
78	12/2/22	ISSUED FOR PERMIT	ET
79	12/2/22	ISSUED FOR PERMIT	ET
80	12/2/22	ISSUED FOR PERMIT	ET
81	12/2/22	ISSUED FOR PERMIT	ET
82	12/2/22	ISSUED FOR PERMIT	ET
83	12/2/22	ISSUED FOR PERMIT	ET
84	12/2/22	ISSUED FOR PERMIT	ET
85	12/2/22	ISSUED FOR PERMIT	ET
86	12/2/22	ISSUED FOR PERMIT	ET
87	12/2/22	ISSUED FOR PERMIT	ET
88	12/2/22	ISSUED FOR PERMIT	ET
89	12/2/22	ISSUED FOR PERMIT	ET
90	12/2/22	ISSUED FOR PERMIT	ET
91	12/2/22	ISSUED FOR PERMIT	ET
92	12/2/22	ISSUED FOR PERMIT	ET
93	12/2/22	ISSUED FOR PERMIT	ET
94	12/2/22	ISSUED FOR PERMIT	ET
95	12/2/22	ISSUED FOR PERMIT	ET
96	12/2/22	ISSUED FOR PERMIT	ET
97	12/2/22	ISSUED FOR PERMIT	ET
98	12/2/22	ISSUED FOR PERMIT	ET
99	12/2/22	ISSUED FOR PERMIT	ET
100	12/2/22	ISSUED FOR PERMIT	ET

ROOF PLANS
 BUILDINGS 300,
 400 AND 500
 DRAWING NO.
A2.2
 SHEET TITLE



NOTES:
 (1) REMOVE AND REINSTALL SHEET METAL AS REQUIRED TO INSTALL EDGE
 METAL FLASHING OVER THE ROOF/WALL JOINT INTERFACE (2 LOCATIONS).
 (2) REFER TO DETAIL 11/F04-01 FOR DUCT CURB FLASHING (2 LOCATIONS).
 (3) REFER TO DETAIL 11/F04-02 FOR DUCT CURB FLASHING (2 LOCATIONS).
 (4) REFER TO SPECIFICATIONS FOR AIR QUANTITIES AND OTHER INSTALLATION
 REQUIREMENTS.

1 ROOF PLAN—BUILDING_300
 SCALE: 1/8"=1'-0"

2 ROOF PLAN—BUILDING_400
 SCALE: 1/8"=1'-0"

3 ROOF PLAN—BUILDING_500
 SCALE: 1/8"=1'-0"

Standard Engineers, Inc.
 Consulting-Design
 2700 Mission Drive
 Fremont, CA 94538
 (925) 436-8800
 www.standardengineers.com



PROJECT
 ROOF REPLACEMENT-BUILDINGS 100 TO 500
 NORTHWOOD ELEMENTARY SCHOOL
 2760 EAST TRIMBLE ROAD
 SAN JOSE, CALIFORNIA
 OWNERS
 BERRESSA UNION SCHOOL DISTRICT
 1376 FIDMONT ROAD
 SAN JOSE, CALIFORNIA

NO.	DATE	DESCRIPTION	BY
1	12/22	REVISION	ET
2	01/22	REVISION	ET
3	02/22	REVISION	ET
4	03/22	REVISION	ET
5	04/22	REVISION	ET
6	05/22	REVISION	ET
7	06/22	REVISION	ET
8	07/22	REVISION	ET
9	08/22	REVISION	ET
10	09/22	REVISION	ET
11	10/22	REVISION	ET
12	11/22	REVISION	ET
13	12/22	REVISION	ET
14	01/23	REVISION	ET
15	02/23	REVISION	ET
16	03/23	REVISION	ET
17	04/23	REVISION	ET
18	05/23	REVISION	ET
19	06/23	REVISION	ET
20	07/23	REVISION	ET
21	08/23	REVISION	ET
22	09/23	REVISION	ET
23	10/23	REVISION	ET
24	11/23	REVISION	ET
25	12/23	REVISION	ET
26	01/24	REVISION	ET
27	02/24	REVISION	ET
28	03/24	REVISION	ET
29	04/24	REVISION	ET
30	05/24	REVISION	ET
31	06/24	REVISION	ET
32	07/24	REVISION	ET
33	08/24	REVISION	ET
34	09/24	REVISION	ET
35	10/24	REVISION	ET
36	11/24	REVISION	ET
37	12/24	REVISION	ET
38	01/25	REVISION	ET
39	02/25	REVISION	ET
40	03/25	REVISION	ET
41	04/25	REVISION	ET
42	05/25	REVISION	ET
43	06/25	REVISION	ET
44	07/25	REVISION	ET
45	08/25	REVISION	ET
46	09/25	REVISION	ET
47	10/25	REVISION	ET
48	11/25	REVISION	ET
49	12/25	REVISION	ET
50	01/26	REVISION	ET
51	02/26	REVISION	ET
52	03/26	REVISION	ET
53	04/26	REVISION	ET
54	05/26	REVISION	ET
55	06/26	REVISION	ET
56	07/26	REVISION	ET
57	08/26	REVISION	ET
58	09/26	REVISION	ET
59	10/26	REVISION	ET
60	11/26	REVISION	ET
61	12/26	REVISION	ET
62	01/27	REVISION	ET
63	02/27	REVISION	ET
64	03/27	REVISION	ET
65	04/27	REVISION	ET
66	05/27	REVISION	ET
67	06/27	REVISION	ET
68	07/27	REVISION	ET
69	08/27	REVISION	ET
70	09/27	REVISION	ET
71	10/27	REVISION	ET
72	11/27	REVISION	ET
73	12/27	REVISION	ET
74	01/28	REVISION	ET
75	02/28	REVISION	ET
76	03/28	REVISION	ET
77	04/28	REVISION	ET
78	05/28	REVISION	ET
79	06/28	REVISION	ET
80	07/28	REVISION	ET
81	08/28	REVISION	ET
82	09/28	REVISION	ET
83	10/28	REVISION	ET
84	11/28	REVISION	ET
85	12/28	REVISION	ET
86	01/29	REVISION	ET
87	02/29	REVISION	ET
88	03/29	REVISION	ET
89	04/29	REVISION	ET
90	05/29	REVISION	ET
91	06/29	REVISION	ET
92	07/29	REVISION	ET
93	08/29	REVISION	ET
94	09/29	REVISION	ET
95	10/29	REVISION	ET
96	11/29	REVISION	ET
97	12/29	REVISION	ET
98	01/30	REVISION	ET
99	02/30	REVISION	ET
100	03/30	REVISION	ET
101	04/30	REVISION	ET
102	05/30	REVISION	ET
103	06/30	REVISION	ET
104	07/30	REVISION	ET
105	08/30	REVISION	ET
106	09/30	REVISION	ET
107	10/30	REVISION	ET
108	11/30	REVISION	ET
109	12/30	REVISION	ET
110	01/31	REVISION	ET
111	02/31	REVISION	ET
112	03/31	REVISION	ET
113	04/31	REVISION	ET
114	05/31	REVISION	ET
115	06/31	REVISION	ET
116	07/31	REVISION	ET
117	08/31	REVISION	ET
118	09/31	REVISION	ET
119	10/31	REVISION	ET
120	11/31	REVISION	ET
121	12/31	REVISION	ET
122	01/32	REVISION	ET
123	02/32	REVISION	ET
124	03/32	REVISION	ET
125	04/32	REVISION	ET
126	05/32	REVISION	ET
127	06/32	REVISION	ET
128	07/32	REVISION	ET
129	08/32	REVISION	ET
130	09/32	REVISION	ET
131	10/32	REVISION	ET
132	11/32	REVISION	ET
133	12/32	REVISION	ET
134	01/33	REVISION	ET
135	02/33	REVISION	ET
136	03/33	REVISION	ET
137	04/33	REVISION	ET
138	05/33	REVISION	ET
139	06/33	REVISION	ET
140	07/33	REVISION	ET
141	08/33	REVISION	ET
142	09/33	REVISION	ET
143	10/33	REVISION	ET
144	11/33	REVISION	ET
145	12/33	REVISION	ET
146	01/34	REVISION	ET
147	02/34	REVISION	ET
148	03/34	REVISION	ET
149	04/34	REVISION	ET
150	05/34	REVISION	ET
151	06/34	REVISION	ET
152	07/34	REVISION	ET
153	08/34	REVISION	ET
154	09/34	REVISION	ET
155	10/34	REVISION	ET
156	11/34	REVISION	ET
157	12/34	REVISION	ET
158	01/35	REVISION	ET
159	02/35	REVISION	ET
160	03/35	REVISION	ET
161	04/35	REVISION	ET
162	05/35	REVISION	ET
163	06/35	REVISION	ET
164	07/35	REVISION	ET
165	08/35	REVISION	ET
166	09/35	REVISION	ET
167	10/35	REVISION	ET
168	11/35	REVISION	ET
169	12/35	REVISION	ET
170	01/36	REVISION	ET
171	02/36	REVISION	ET
172	03/36	REVISION	ET
173	04/36	REVISION	ET
174	05/36	REVISION	ET
175	06/36	REVISION	ET
176	07/36	REVISION	ET
177	08/36	REVISION	ET
178	09/36	REVISION	ET
179	10/36	REVISION	ET
180	11/36	REVISION	ET
181	12/36	REVISION	ET
182	01/37	REVISION	ET
183	02/37	REVISION	ET
184	03/37	REVISION	ET
185	04/37	REVISION	ET
186	05/37	REVISION	ET
187	06/37	REVISION	ET
188	07/37	REVISION	ET
189	08/37	REVISION	ET
190	09/37	REVISION	ET
191	10/37	REVISION	ET
192	11/37	REVISION	ET
193	12/37	REVISION	ET
194	01/38	REVISION	ET
195	02/38	REVISION	ET
196	03/38	REVISION	ET
197	04/38	REVISION	ET
198	05/38	REVISION	ET
199	06/38	REVISION	ET
200	07/38	REVISION	ET
201	08/38	REVISION	ET
202	09/38	REVISION	ET
203	10/38	REVISION	ET
204	11/38	REVISION	ET
205	12/38	REVISION	ET
206	01/39	REVISION	ET
207	02/39	REVISION	ET
208	03/39	REVISION	ET
209	04/39	REVISION	ET
210	05/39	REVISION	ET
211	06/39	REVISION	ET
212	07/39	REVISION	ET
213	08/39	REVISION	ET
214	09/39	REVISION	ET
215	10/39	REVISION	ET
216	11/39	REVISION	ET
217	12/39	REVISION	ET
218	01/40	REVISION	ET
219	02/40	REVISION	ET
220	03/40	REVISION	ET
221	04/40	REVISION	ET
222	05/40	REVISION	ET
223	06/40	REVISION	ET
224	07/40	REVISION	ET
225	08/40	REVISION	ET
226	09/40	REVISION	ET
227	10/40	REVISION	ET
228	11/40	REVISION	ET
229	12/40	REVISION	ET
230	01/41	REVISION	ET
231	02/41	REVISION	ET
232	03/41	REVISION	ET
233	04/41	REVISION	ET
234	05/41	REVISION	ET
235	06/41	REVISION	ET
236	07/41	REVISION	ET
237	08/41	REVISION	ET
238	09/41	REVISION	ET
239	10/41	REVISION	ET
240	11/41	REVISION	ET
241	12/41	REVISION	ET
242	01/42	REVISION	ET
243	02/42	REVISION	ET
244	03/42	REVISION	ET
245	04/42	REVISION	ET
246	05/42	REVISION	ET
247	06/42	REVISION	ET
248	07/42	REVISION	ET
249	08/42	REVISION	ET
250	09/42	REVISION	ET
251	10/42	REVISION	ET
252	11/42	REVISION	ET
253	12/42	REVISION	ET
254	01/43	REVISION	ET
255	02/43	REVISION	ET
256	03/43	REVISION	ET
257	04/43	REVISION	ET
258	05/43	REVISION	ET
259	06/43	REVISION	ET
260	07/43	REVISION	ET
261	08/43	REVISION	ET
262	09/43	REVISION	ET
263	10/43	REVISION	ET
264	11/43	REVISION	ET
265	12/43	REVISION	ET
266	01/44	REVISION	ET
267	02/44	REVISION	ET
268	03/44	REVISION	ET
269	04/44	REVISION	ET
270	05/44	REVISION	ET
271	06/44	REVISION	ET
272	07/44	REVISION	ET
273	08/44	REVISION	ET
274	09/44	REVISION	ET
275	10/44	REVISION	ET
276	11/44	REVISION	ET
277	12/44	REVISION	ET
278	01/45	REVISION	ET
279	02/45	REVISION	ET
280	03/45	REVISION	ET
281	04/45	REVISION	ET
282	05/45	REVISION	ET
283	06/45	REVISION	ET
284	07/45	REVISION	ET
285	08/45	REVISION	ET
286	09/45	REVISION	ET
287	10/45	REVISION	ET
288	11/4		

Standard Engineering, Inc.
 Consulting Engineers
 2000 Inwood Drive
 #1000A, Suite 100
 San Jose, California 95131
 Tel: 408.261.1000
 Fax: 408.261.1001
 www.standardeng.com

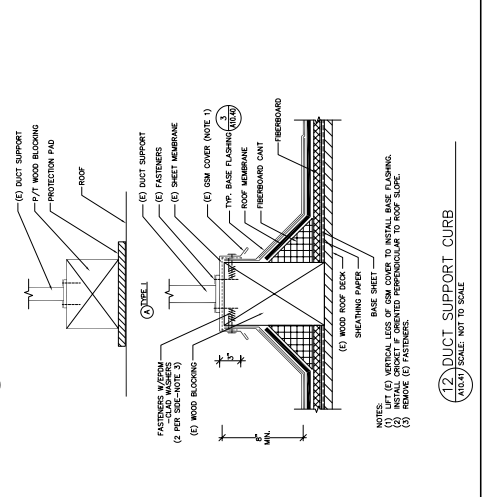
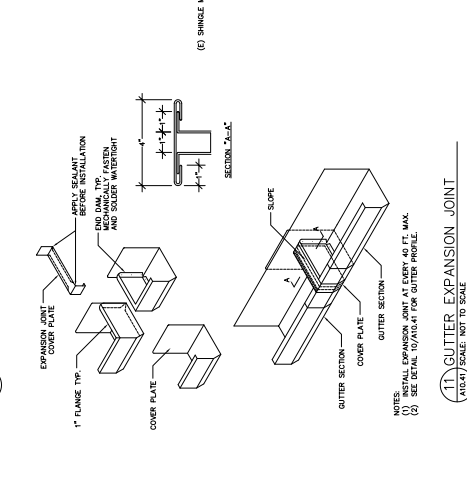
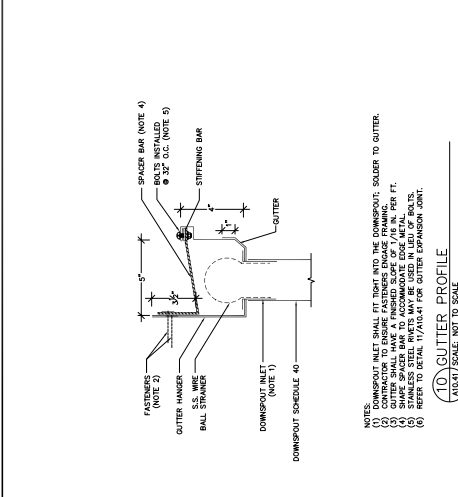
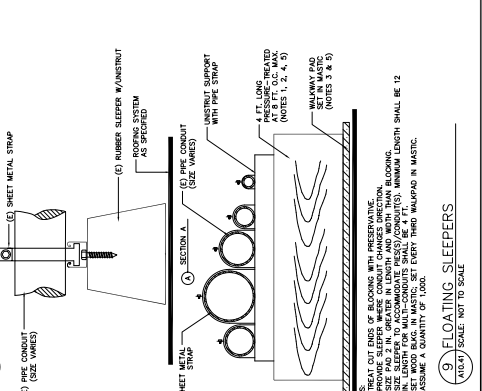
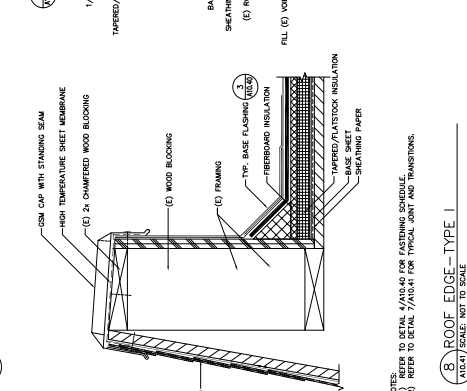
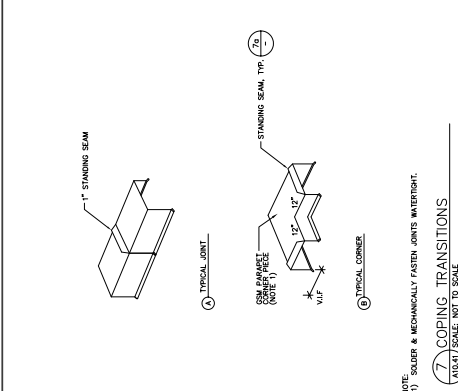
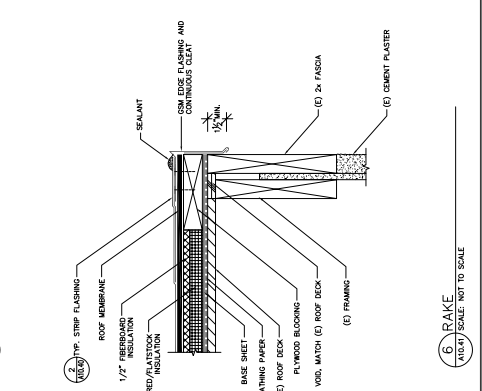
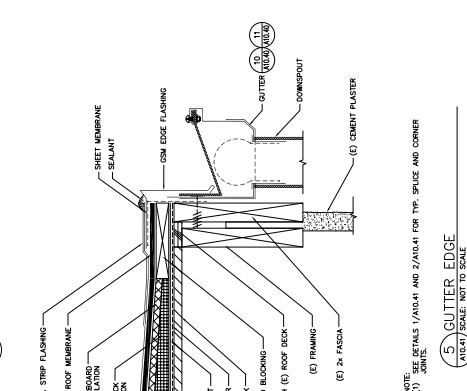
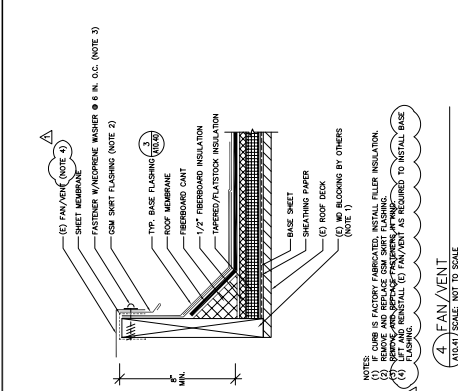
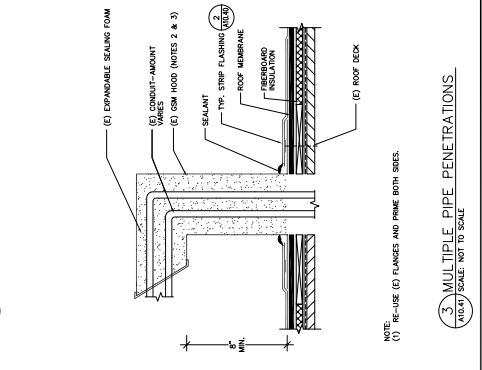
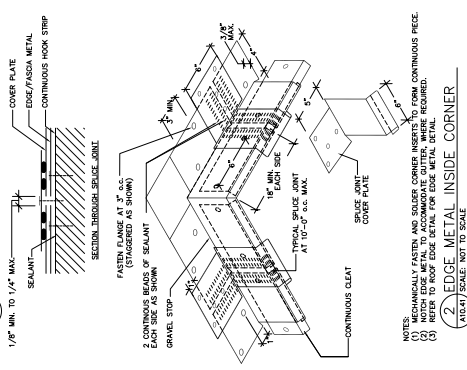
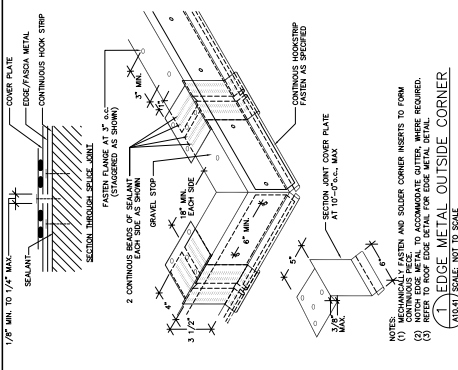
This drawing and the design and construction details herein are the property of Standard Engineering, Inc. and shall remain the property of Standard Engineering, Inc. unless otherwise stated.

SE
 REGISTERED PROFESSIONAL ENGINEER
 LICENSE NO. 44830
 EXPIRES 12/31/2021

PROJECT
 ROOF REPLACEMENT - BUILDINGS 100 TO 500
 NORTHWOOD ELEMENTARY SCHOOL
 2760 EAST TRIMBLE ROAD
 SAN JOSE, CALIFORNIA 95128
 OWNER
 BERRESSA UNION SCHOOL DISTRICT
 8375 FIDMONT ROAD
 SAN JOSE, CALIFORNIA 95128

NO.	DATE	DESCRIPTION	BY
1	10/2/22	ISSUED FOR PERMIT	ET
2	10/2/22	ISSUED FOR PERMIT	ET
3	10/2/22	ISSUED FOR PERMIT	ET
4	10/2/22	ISSUED FOR PERMIT	ET
5	10/2/22	ISSUED FOR PERMIT	ET
6	10/2/22	ISSUED FOR PERMIT	ET
7	10/2/22	ISSUED FOR PERMIT	ET
8	10/2/22	ISSUED FOR PERMIT	ET
9	10/2/22	ISSUED FOR PERMIT	ET
10	10/2/22	ISSUED FOR PERMIT	ET
11	10/2/22	ISSUED FOR PERMIT	ET
12	10/2/22	ISSUED FOR PERMIT	ET
13	10/2/22	ISSUED FOR PERMIT	ET
14	10/2/22	ISSUED FOR PERMIT	ET
15	10/2/22	ISSUED FOR PERMIT	ET
16	10/2/22	ISSUED FOR PERMIT	ET
17	10/2/22	ISSUED FOR PERMIT	ET
18	10/2/22	ISSUED FOR PERMIT	ET
19	10/2/22	ISSUED FOR PERMIT	ET
20	10/2/22	ISSUED FOR PERMIT	ET
21	10/2/22	ISSUED FOR PERMIT	ET
22	10/2/22	ISSUED FOR PERMIT	ET
23	10/2/22	ISSUED FOR PERMIT	ET
24	10/2/22	ISSUED FOR PERMIT	ET
25	10/2/22	ISSUED FOR PERMIT	ET
26	10/2/22	ISSUED FOR PERMIT	ET
27	10/2/22	ISSUED FOR PERMIT	ET
28	10/2/22	ISSUED FOR PERMIT	ET
29	10/2/22	ISSUED FOR PERMIT	ET
30	10/2/22	ISSUED FOR PERMIT	ET
31	10/2/22	ISSUED FOR PERMIT	ET
32	10/2/22	ISSUED FOR PERMIT	ET
33	10/2/22	ISSUED FOR PERMIT	ET
34	10/2/22	ISSUED FOR PERMIT	ET
35	10/2/22	ISSUED FOR PERMIT	ET
36	10/2/22	ISSUED FOR PERMIT	ET
37	10/2/22	ISSUED FOR PERMIT	ET
38	10/2/22	ISSUED FOR PERMIT	ET
39	10/2/22	ISSUED FOR PERMIT	ET
40	10/2/22	ISSUED FOR PERMIT	ET
41	10/2/22	ISSUED FOR PERMIT	ET
42	10/2/22	ISSUED FOR PERMIT	ET
43	10/2/22	ISSUED FOR PERMIT	ET
44	10/2/22	ISSUED FOR PERMIT	ET
45	10/2/22	ISSUED FOR PERMIT	ET
46	10/2/22	ISSUED FOR PERMIT	ET
47	10/2/22	ISSUED FOR PERMIT	ET
48	10/2/22	ISSUED FOR PERMIT	ET
49	10/2/22	ISSUED FOR PERMIT	ET
50	10/2/22	ISSUED FOR PERMIT	ET
51	10/2/22	ISSUED FOR PERMIT	ET
52	10/2/22	ISSUED FOR PERMIT	ET
53	10/2/22	ISSUED FOR PERMIT	ET
54	10/2/22	ISSUED FOR PERMIT	ET
55	10/2/22	ISSUED FOR PERMIT	ET
56	10/2/22	ISSUED FOR PERMIT	ET
57	10/2/22	ISSUED FOR PERMIT	ET
58	10/2/22	ISSUED FOR PERMIT	ET
59	10/2/22	ISSUED FOR PERMIT	ET
60	10/2/22	ISSUED FOR PERMIT	ET
61	10/2/22	ISSUED FOR PERMIT	ET
62	10/2/22	ISSUED FOR PERMIT	ET
63	10/2/22	ISSUED FOR PERMIT	ET
64	10/2/22	ISSUED FOR PERMIT	ET
65	10/2/22	ISSUED FOR PERMIT	ET
66	10/2/22	ISSUED FOR PERMIT	ET
67	10/2/22	ISSUED FOR PERMIT	ET
68	10/2/22	ISSUED FOR PERMIT	ET
69	10/2/22	ISSUED FOR PERMIT	ET
70	10/2/22	ISSUED FOR PERMIT	ET
71	10/2/22	ISSUED FOR PERMIT	ET
72	10/2/22	ISSUED FOR PERMIT	ET
73	10/2/22	ISSUED FOR PERMIT	ET
74	10/2/22	ISSUED FOR PERMIT	ET
75	10/2/22	ISSUED FOR PERMIT	ET
76	10/2/22	ISSUED FOR PERMIT	ET
77	10/2/22	ISSUED FOR PERMIT	ET
78	10/2/22	ISSUED FOR PERMIT	ET
79	10/2/22	ISSUED FOR PERMIT	ET
80	10/2/22	ISSUED FOR PERMIT	ET
81	10/2/22	ISSUED FOR PERMIT	ET
82	10/2/22	ISSUED FOR PERMIT	ET
83	10/2/22	ISSUED FOR PERMIT	ET
84	10/2/22	ISSUED FOR PERMIT	ET
85	10/2/22	ISSUED FOR PERMIT	ET
86	10/2/22	ISSUED FOR PERMIT	ET
87	10/2/22	ISSUED FOR PERMIT	ET
88	10/2/22	ISSUED FOR PERMIT	ET
89	10/2/22	ISSUED FOR PERMIT	ET
90	10/2/22	ISSUED FOR PERMIT	ET
91	10/2/22	ISSUED FOR PERMIT	ET
92	10/2/22	ISSUED FOR PERMIT	ET
93	10/2/22	ISSUED FOR PERMIT	ET
94	10/2/22	ISSUED FOR PERMIT	ET
95	10/2/22	ISSUED FOR PERMIT	ET
96	10/2/22	ISSUED FOR PERMIT	ET
97	10/2/22	ISSUED FOR PERMIT	ET
98	10/2/22	ISSUED FOR PERMIT	ET
99	10/2/22	ISSUED FOR PERMIT	ET
100	10/2/22	ISSUED FOR PERMIT	ET

ROOF REPLACEMENT DETAILS
 DRAWING NO. **A10.41**
 SHEET TITLE



NOTES:
 (1) REFER TO DETAIL 7/A10.40 FOR FASTENING SCHEDULE.
 (2) REFER TO DETAIL 7/A10.41 FOR TYPICAL JOINT AND TRANSITIONS.
 (3) SEE DETAIL 10/A10.41 FOR GUTTER PROFILE.
 (4) REFER TO DETAIL 11/A10.41 FOR GUTTER EXPANSION JOINT.
 (5) REFER TO DETAIL 12/A10.41 FOR DUCT SUPPORT CURB.
 (6) REMOVE (E) FASTENERS.
 (7) REMOVE (E) FASTENERS.
 (8) REMOVE (E) FASTENERS.
 (9) REMOVE (E) FASTENERS.
 (10) REMOVE (E) FASTENERS.
 (11) REMOVE (E) FASTENERS.
 (12) REMOVE (E) FASTENERS.
 (13) REMOVE (E) FASTENERS.
 (14) REMOVE (E) FASTENERS.
 (15) REMOVE (E) FASTENERS.
 (16) REMOVE (E) FASTENERS.
 (17) REMOVE (E) FASTENERS.
 (18) REMOVE (E) FASTENERS.
 (19) REMOVE (E) FASTENERS.
 (20) REMOVE (E) FASTENERS.
 (21) REMOVE (E) FASTENERS.
 (22) REMOVE (E) FASTENERS.
 (23) REMOVE (E) FASTENERS.
 (24) REMOVE (E) FASTENERS.
 (25) REMOVE (E) FASTENERS.
 (26) REMOVE (E) FASTENERS.
 (27) REMOVE (E) FASTENERS.
 (28) REMOVE (E) FASTENERS.
 (29) REMOVE (E) FASTENERS.
 (30) REMOVE (E) FASTENERS.
 (31) REMOVE (E) FASTENERS.
 (32) REMOVE (E) FASTENERS.
 (33) REMOVE (E) FASTENERS.
 (34) REMOVE (E) FASTENERS.
 (35) REMOVE (E) FASTENERS.
 (36) REMOVE (E) FASTENERS.
 (37) REMOVE (E) FASTENERS.
 (38) REMOVE (E) FASTENERS.
 (39) REMOVE (E) FASTENERS.
 (40) REMOVE (E) FASTENERS.
 (41) REMOVE (E) FASTENERS.
 (42) REMOVE (E) FASTENERS.
 (43) REMOVE (E) FASTENERS.
 (44) REMOVE (E) FASTENERS.
 (45) REMOVE (E) FASTENERS.
 (46) REMOVE (E) FASTENERS.
 (47) REMOVE (E) FASTENERS.
 (48) REMOVE (E) FASTENERS.
 (49) REMOVE (E) FASTENERS.
 (50) REMOVE (E) FASTENERS.
 (51) REMOVE (E) FASTENERS.
 (52) REMOVE (E) FASTENERS.
 (53) REMOVE (E) FASTENERS.
 (54) REMOVE (E) FASTENERS.
 (55) REMOVE (E) FASTENERS.
 (56) REMOVE (E) FASTENERS.
 (57) REMOVE (E) FASTENERS.
 (58) REMOVE (E) FASTENERS.
 (59) REMOVE (E) FASTENERS.
 (60) REMOVE (E) FASTENERS.
 (61) REMOVE (E) FASTENERS.
 (62) REMOVE (E) FASTENERS.
 (63) REMOVE (E) FASTENERS.
 (64) REMOVE (E) FASTENERS.
 (65) REMOVE (E) FASTENERS.
 (66) REMOVE (E) FASTENERS.
 (67) REMOVE (E) FASTENERS.
 (68) REMOVE (E) FASTENERS.
 (69) REMOVE (E) FASTENERS.
 (70) REMOVE (E) FASTENERS.
 (71) REMOVE (E) FASTENERS.
 (72) REMOVE (E) FASTENERS.
 (73) REMOVE (E) FASTENERS.
 (74) REMOVE (E) FASTENERS.
 (75) REMOVE (E) FASTENERS.
 (76) REMOVE (E) FASTENERS.
 (77) REMOVE (E) FASTENERS.
 (78) REMOVE (E) FASTENERS.
 (79) REMOVE (E) FASTENERS.
 (80) REMOVE (E) FASTENERS.
 (81) REMOVE (E) FASTENERS.
 (82) REMOVE (E) FASTENERS.
 (83) REMOVE (E) FASTENERS.
 (84) REMOVE (E) FASTENERS.
 (85) REMOVE (E) FASTENERS.
 (86) REMOVE (E) FASTENERS.
 (87) REMOVE (E) FASTENERS.
 (88) REMOVE (E) FASTENERS.
 (89) REMOVE (E) FASTENERS.
 (90) REMOVE (E) FASTENERS.
 (91) REMOVE (E) FASTENERS.
 (92) REMOVE (E) FASTENERS.
 (93) REMOVE (E) FASTENERS.
 (94) REMOVE (E) FASTENERS.
 (95) REMOVE (E) FASTENERS.
 (96) REMOVE (E) FASTENERS.
 (97) REMOVE (E) FASTENERS.
 (98) REMOVE (E) FASTENERS.
 (99) REMOVE (E) FASTENERS.
 (100) REMOVE (E) FASTENERS.

Standard Engineers, Inc.
 Consulting Engineers
 2700 Raymond Drive
 Redwood City, CA 94061
 Tel: (650) 967-1100
 Fax: (650) 967-1101
 www.standardengineers.com

This drawing and the design and construction details herein are the property of Standard Engineers, Inc. and shall remain the property of Standard Engineers, Inc. unless otherwise indicated.

DATE: 10/15/2021
 DRAWING SCALE: AS NOTED
 SHEET TITLE: ROOF REPLACEMENT DETAILS

SE
 Standard Engineers, Inc.
 2700 Raymond Drive
 Redwood City, CA 94061
 Tel: (650) 967-1100
 Fax: (650) 967-1101
 www.standardengineers.com

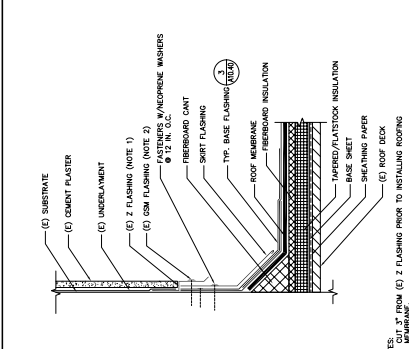
DATE: 10/15/2021
 DRAWING SCALE: AS NOTED
 SHEET TITLE: ROOF REPLACEMENT DETAILS

PROJECT: ROOF REPLACEMENT-BUILDINGS 100 TO 500
 NORTHWOOD ELEMENTARY SCHOOL
 2760 EAST TRIMBLE ROAD
 SAN JOSE, CALIFORNIA
 OWNER: BERRESSA UNION SCHOOL DISTRICT
 1376 PIEDMONT ROAD
 SAN JOSE, CALIFORNIA

NO.	DATE	DESCRIPTION	BY
1	10/15/2021	ISSUED FOR PERMIT	ET
2	10/15/2021	ISSUED FOR PERMIT	ET
3	10/15/2021	ISSUED FOR PERMIT	ET
4	10/15/2021	ISSUED FOR PERMIT	ET
5	10/15/2021	ISSUED FOR PERMIT	ET
6	10/15/2021	ISSUED FOR PERMIT	ET
7	10/15/2021	ISSUED FOR PERMIT	ET
8	10/15/2021	ISSUED FOR PERMIT	ET
9	10/15/2021	ISSUED FOR PERMIT	ET
10	10/15/2021	ISSUED FOR PERMIT	ET
11	10/15/2021	ISSUED FOR PERMIT	ET
12	10/15/2021	ISSUED FOR PERMIT	ET

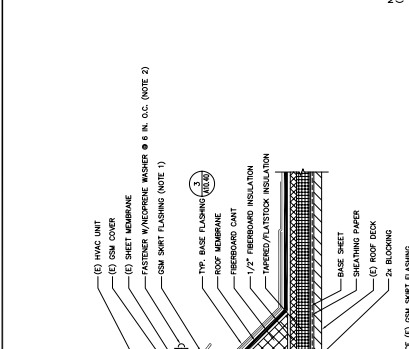
ROOF REPLACEMENT
 DETAILS

DRAWING NO. A10.42



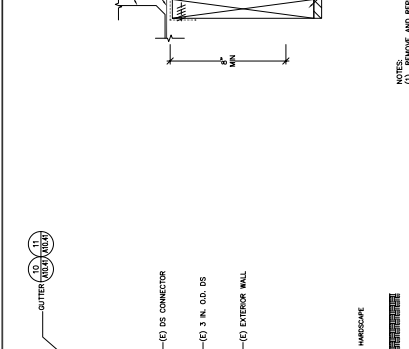
1. ROOF TO WALL-TYPE I
 (1/4"=1'-0") SCALE, NOT TO SCALE

NOTES:
 (1) CUT 3/8" IRON (E) Z FLASHING PRIOR TO INSTALLING ROOFING
 (2) PRIME TRANSITION PIERCE & CHANGES IN WALL PLUMBING JOINTS.
 (3) REMOVE AND REPLACE FASTENER IN KIND.
 (4) REMOVE AND REPLACE FASTENER IN KIND.
 (5) REMOVE (E) OSB FLASHING.

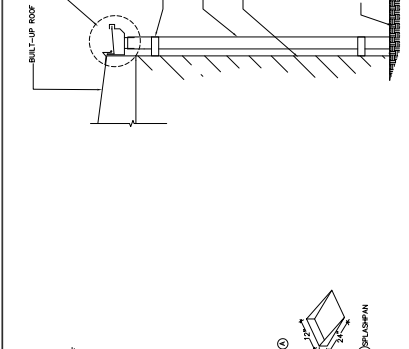


2. MECHANICAL UNIT CURB-TYPE I
 (1/4"=1'-0") SCALE, NOT TO SCALE

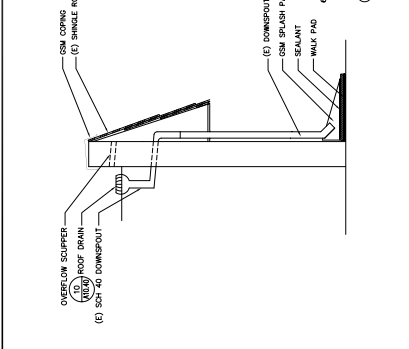
NOTES:
 (1) INSTALL CURBLET IF BLOCK LENGTH IS GREATER THAN 2 FT. AND IF
 (2) PRIME TRANSITION PIERCE & CHANGES IN WALL PLUMBING JOINTS.
 (3) REMOVE AND REPLACE FASTENER IN KIND.
 (4) REMOVE AND REPLACE FASTENER IN KIND.



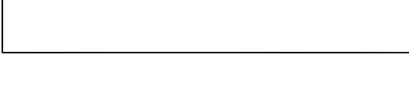
3. DOWNSPOUT-TYPE I
 (1/4"=1'-0") SCALE, NOT TO SCALE



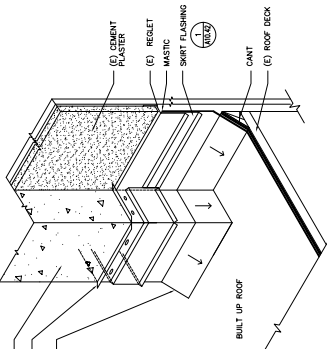
4. DOWNSPOUT-TYPE II
 (1/4"=1'-0") SCALE, NOT TO SCALE



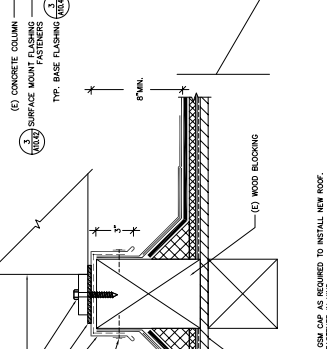
5. DOWNSPOUT-TYPE III
 (1/4"=1'-0") SCALE, NOT TO SCALE



6. DOWNSPOUT-TYPE IV
 (1/4"=1'-0") SCALE, NOT TO SCALE

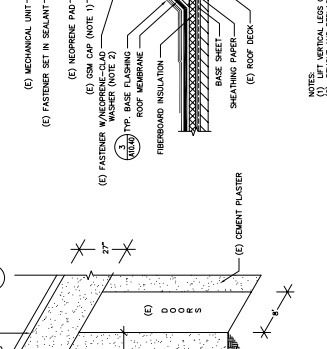


7. WALL CORNER
 (1/4"=1'-0") SCALE, NOT TO SCALE

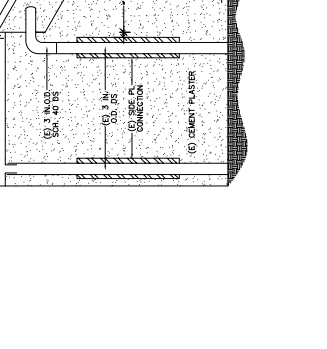


8. MECHANICAL UNIT CURB-TYPE II
 (1/4"=1'-0") SCALE, NOT TO SCALE

NOTES:
 (1) LEFT VERTICAL LEGS OF OSB CAP AS REQUIRED TO INSTALL NEW ROOF.
 (2) REMOVE AND REPLACE FASTENER IN KIND.



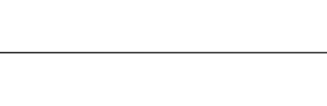
9. DOWNSPOUT-TYPE II
 (1/4"=1'-0") SCALE, NOT TO SCALE



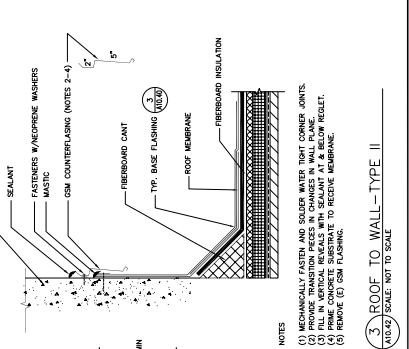
10. DOWNSPOUT-TYPE III
 (1/4"=1'-0") SCALE, NOT TO SCALE



11. DOWNSPOUT-TYPE IV
 (1/4"=1'-0") SCALE, NOT TO SCALE

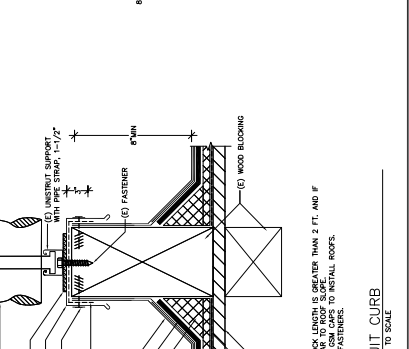


12. DOWNSPOUT-TYPE V
 (1/4"=1'-0") SCALE, NOT TO SCALE



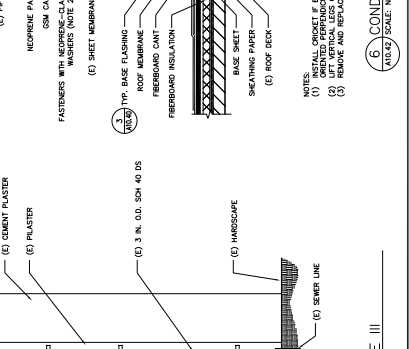
13. ROOF TO WALL-TYPE II
 (1/4"=1'-0") SCALE, NOT TO SCALE

NOTES:
 (1) MECHANICALLY FASTEN AND SOLDER WATER TIGHT CORNER JOINTS.
 (2) PRIME TRANSITION PIERCE & CHANGES IN WALL PLUMBING JOINTS.
 (3) REMOVE AND REPLACE FASTENER IN KIND.
 (4) REMOVE AND REPLACE FASTENER IN KIND.
 (5) REMOVE (E) OSB FLASHING.

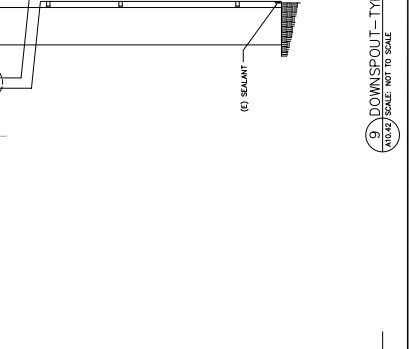


14. CONDUIT CURB
 (1/4"=1'-0") SCALE, NOT TO SCALE

NOTES:
 (1) INSTALL CURBLET IF BLOCK LENGTH IS GREATER THAN 2 FT. AND IF
 (2) PRIME TRANSITION PIERCE & CHANGES IN WALL PLUMBING JOINTS.
 (3) REMOVE AND REPLACE FASTENER IN KIND.
 (4) REMOVE AND REPLACE FASTENER IN KIND.



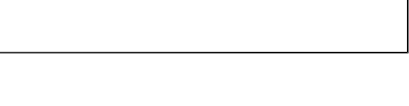
15. DOWNSPOUT-TYPE III
 (1/4"=1'-0") SCALE, NOT TO SCALE



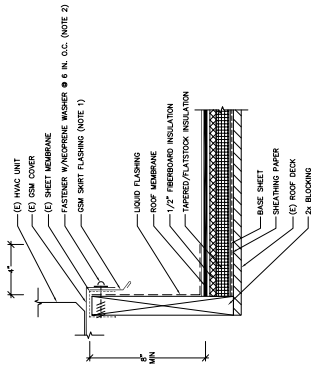
16. DOWNSPOUT-TYPE IV
 (1/4"=1'-0") SCALE, NOT TO SCALE



17. DOWNSPOUT-TYPE V
 (1/4"=1'-0") SCALE, NOT TO SCALE

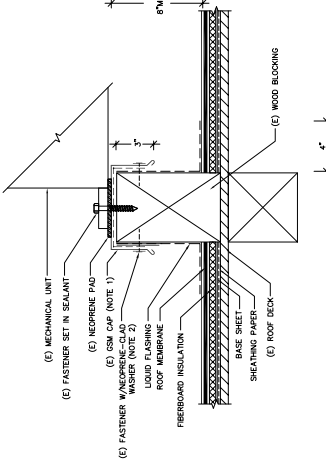


18. DOWNSPOUT-TYPE VI
 (1/4"=1'-0") SCALE, NOT TO SCALE



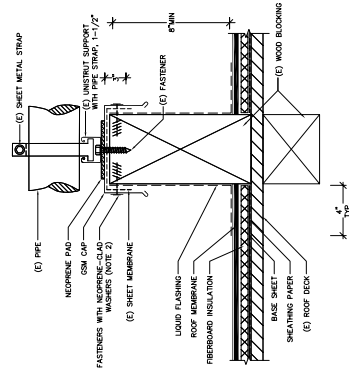
- NOTES:
 (1) REMOVE AND REPAIR (E) GSM SHERT FLASHING.
 (2) REMOVE AND REPLACE FASTENER IN HAND.

1. MECHANICAL UNIT CURB—TYPE I
 (ALTERNATE)
 (ALL) SCALE: NOT TO SCALE



- NOTES:
 (1) LIFT VERTICAL LEGS OF GSM CAP AS REQUIRED TO INSTALL NEW ROOF.
 (2) REMOVE AND REPLACE FASTENER IN HAND.

2. MECHANICAL UNIT CURB—TYPE II
 (ALTERNATE)
 (ALL) SCALE: NOT TO SCALE



- NOTES:
 (1) INSTALL PIPE AND BLOCK LENGTH IS GREATER THAN 2 FT. AND IF
 (2) LIFT VERTICAL LEGS OF GSM CAPS TO INSTALL ROOF.
 (3) REMOVE AND REPLACE FASTENERS.

3. CONDUIT CURB
 (ALL) SCALE: NOT TO SCALE
 (ALTERNATE)

PROJECT
 ROOF REPLACEMENT—BUILDINGS 100 TO 500
 NORTHWOOD ELEMENTARY SCHOOL
 SAN JOSE, CALIFORNIA
 CLIENTS
 BERRESSA UNION SCHOOL DISTRICT
 1376 FIDMONT ROAD
 SAN JOSE, CALIFORNIA



Standard Engineers, Inc.
 Consulting Engineers
 2100 Alameda Drive
 Fremont, CA 94538
 925-436-1111
 www.standardengineers.com

This drawing and the design and construction information contained herein are the property of Standard Engineers, Inc. and shall remain the confidential property of Standard Engineers, Inc. until such time as the design information is no longer confidential.

NO.	DATE	DESCRIPTION	BY
1	12/22	REVISION	ET
2	01/22	REVISION	ET
3	01/22	REVISION	ET
4	01/22	REVISION	ET
5	01/22	REVISION	ET
6	01/22	REVISION	ET
7	01/22	REVISION	ET
8	01/22	REVISION	ET
9	01/22	REVISION	ET
10	01/22	REVISION	ET
11	01/22	REVISION	ET
12	01/22	REVISION	ET
13	01/22	REVISION	ET
14	01/22	REVISION	ET
15	01/22	REVISION	ET
16	01/22	REVISION	ET
17	01/22	REVISION	ET
18	01/22	REVISION	ET
19	01/22	REVISION	ET
20	01/22	REVISION	ET
21	01/22	REVISION	ET
22	01/22	REVISION	ET
23	01/22	REVISION	ET
24	01/22	REVISION	ET
25	01/22	REVISION	ET
26	01/22	REVISION	ET
27	01/22	REVISION	ET
28	01/22	REVISION	ET
29	01/22	REVISION	ET
30	01/22	REVISION	ET
31	01/22	REVISION	ET
32	01/22	REVISION	ET
33	01/22	REVISION	ET
34	01/22	REVISION	ET
35	01/22	REVISION	ET
36	01/22	REVISION	ET
37	01/22	REVISION	ET
38	01/22	REVISION	ET
39	01/22	REVISION	ET
40	01/22	REVISION	ET
41	01/22	REVISION	ET
42	01/22	REVISION	ET
43	01/22	REVISION	ET
44	01/22	REVISION	ET
45	01/22	REVISION	ET
46	01/22	REVISION	ET
47	01/22	REVISION	ET
48	01/22	REVISION	ET
49	01/22	REVISION	ET
50	01/22	REVISION	ET
51	01/22	REVISION	ET
52	01/22	REVISION	ET
53	01/22	REVISION	ET
54	01/22	REVISION	ET
55	01/22	REVISION	ET
56	01/22	REVISION	ET
57	01/22	REVISION	ET
58	01/22	REVISION	ET
59	01/22	REVISION	ET
60	01/22	REVISION	ET
61	01/22	REVISION	ET
62	01/22	REVISION	ET
63	01/22	REVISION	ET
64	01/22	REVISION	ET
65	01/22	REVISION	ET
66	01/22	REVISION	ET
67	01/22	REVISION	ET
68	01/22	REVISION	ET
69	01/22	REVISION	ET
70	01/22	REVISION	ET
71	01/22	REVISION	ET
72	01/22	REVISION	ET
73	01/22	REVISION	ET
74	01/22	REVISION	ET
75	01/22	REVISION	ET
76	01/22	REVISION	ET
77	01/22	REVISION	ET
78	01/22	REVISION	ET
79	01/22	REVISION	ET
80	01/22	REVISION	ET
81	01/22	REVISION	ET
82	01/22	REVISION	ET
83	01/22	REVISION	ET
84	01/22	REVISION	ET
85	01/22	REVISION	ET
86	01/22	REVISION	ET
87	01/22	REVISION	ET
88	01/22	REVISION	ET
89	01/22	REVISION	ET
90	01/22	REVISION	ET
91	01/22	REVISION	ET
92	01/22	REVISION	ET
93	01/22	REVISION	ET
94	01/22	REVISION	ET
95	01/22	REVISION	ET
96	01/22	REVISION	ET
97	01/22	REVISION	ET
98	01/22	REVISION	ET
99	01/22	REVISION	ET
100	01/22	REVISION	ET

ROOF REPLACEMENT DETAILS

DRAWING NO. A10.43

SHEET TITLE

DESIGNED BY AEB

DRAWN BY ET

CHECKED BY

DATE 15 OCT 2021

DRAWING SCALE AS NOTED

SHEET TITLE